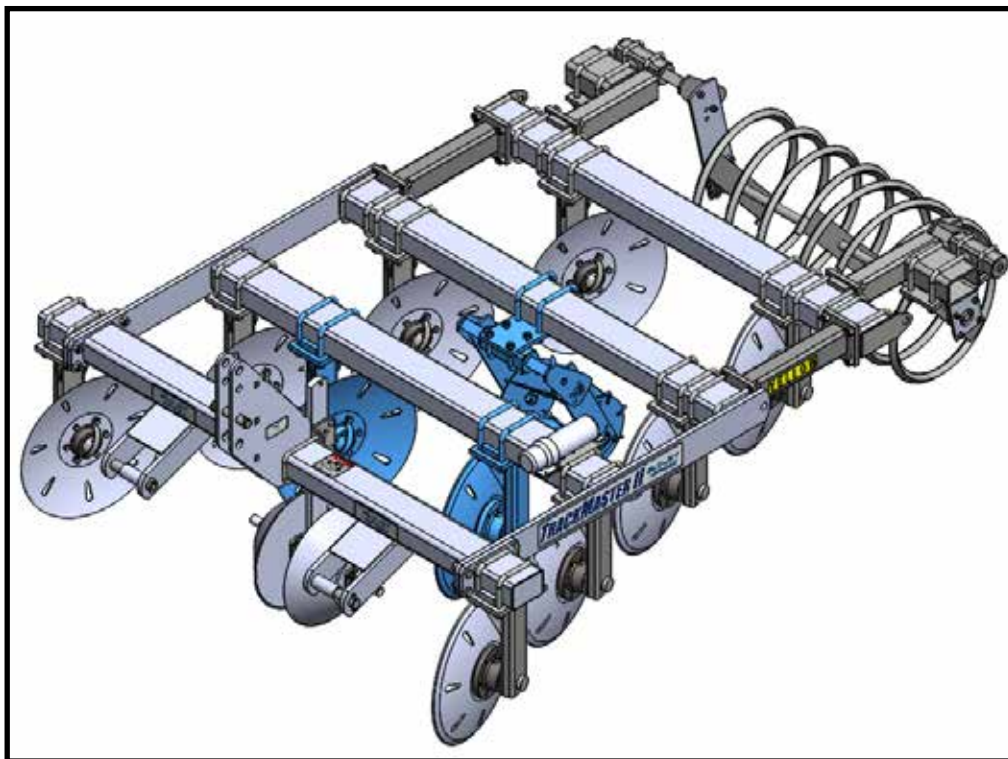


BLU-JET

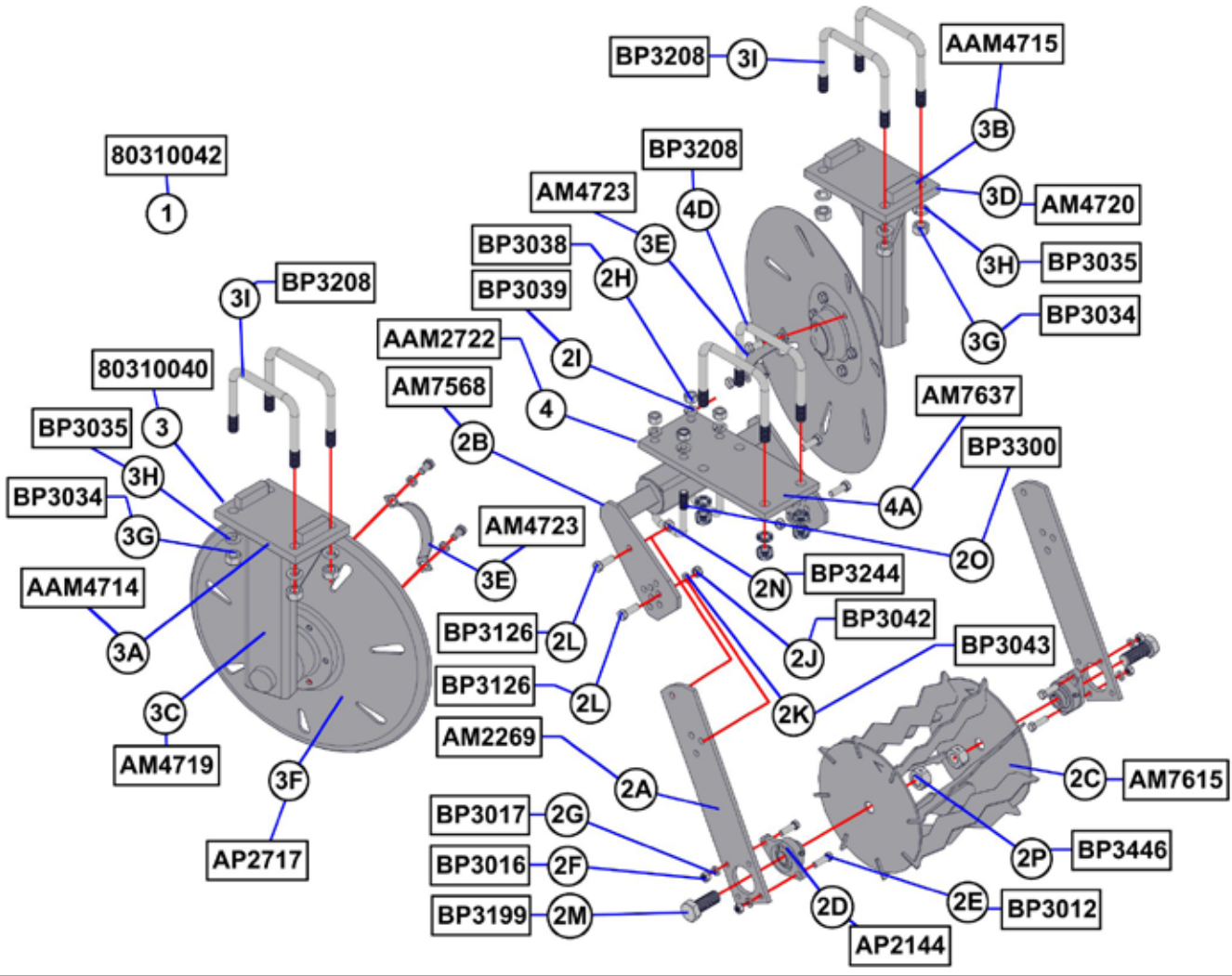


TRACKMASTER II™

PACKERPRO Assembly and Operators Manual



Manual Number 04000037
Rev. 5-4-15

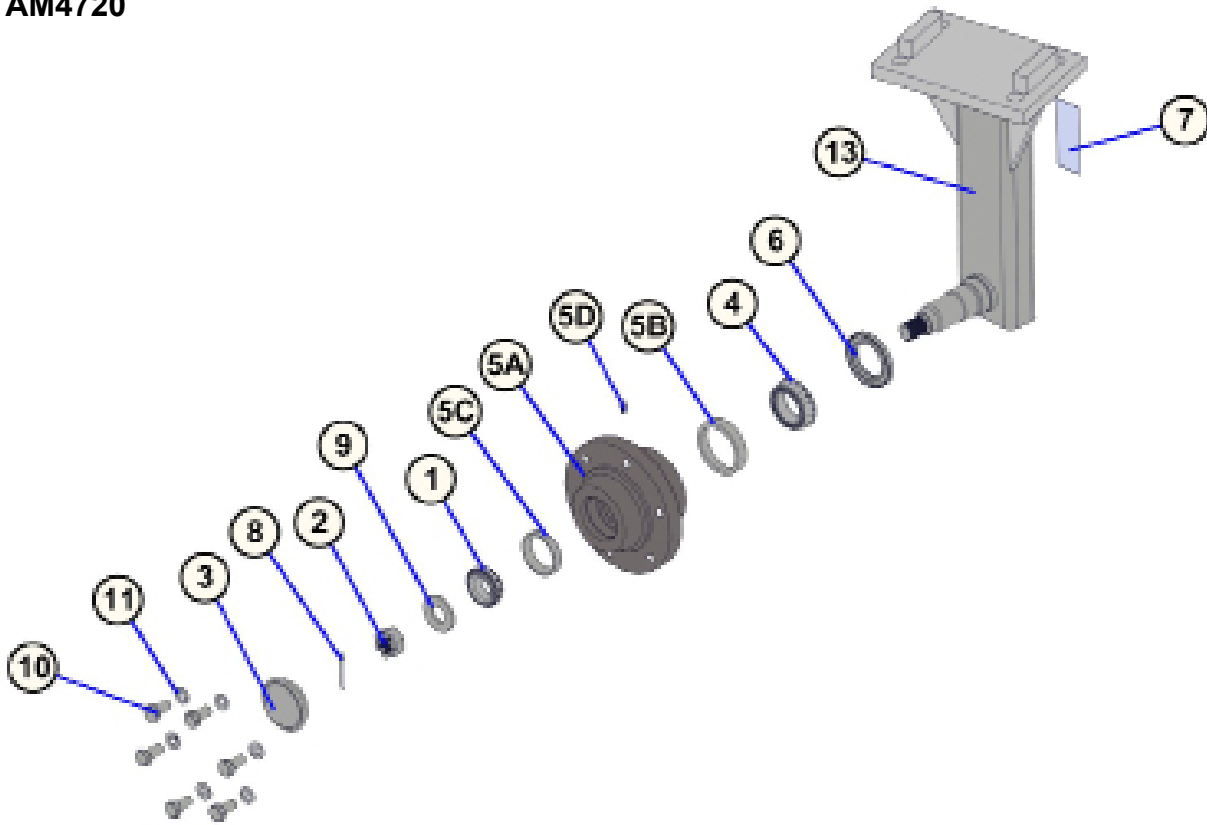




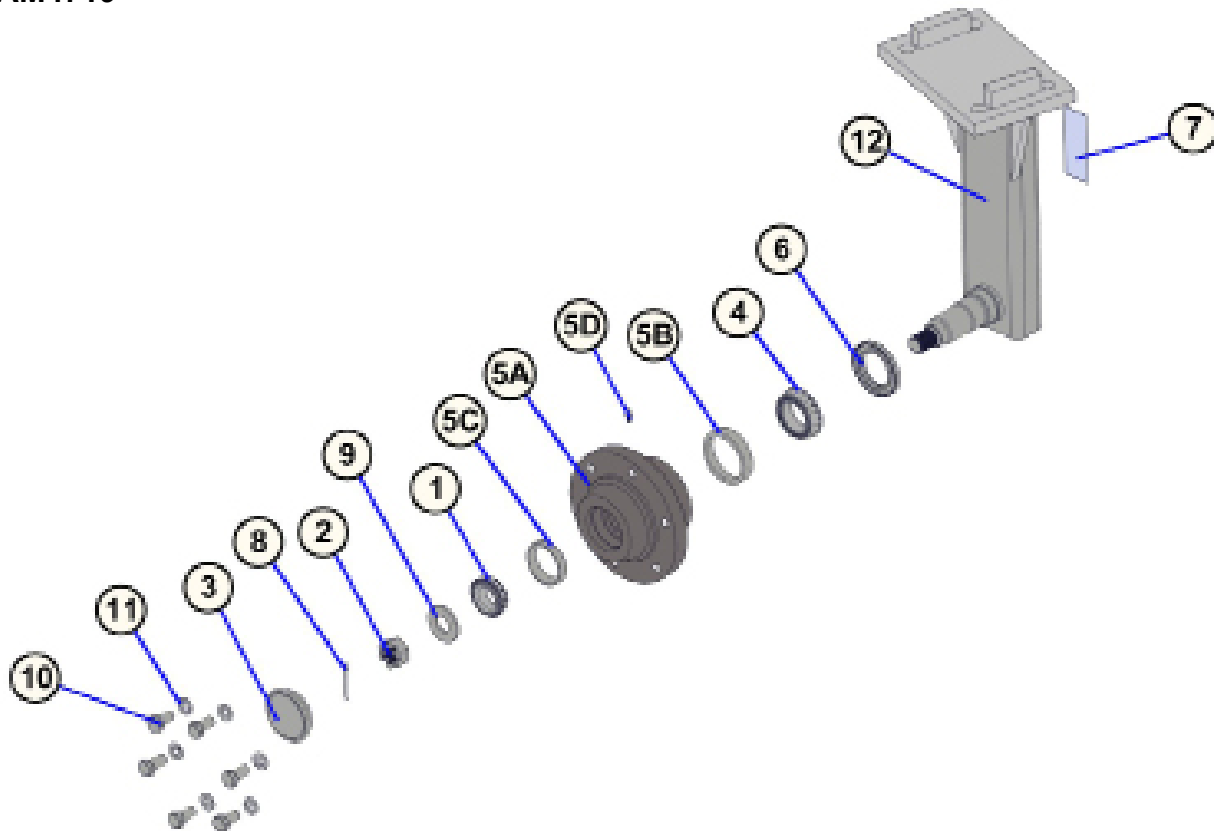
TrackMaster II PackerPro

BOM ID	Qty	Item No	Description
1	1	80310042	PACKERPRO, TRACKMASTER II
2	1	70210641	TORSION ARM & 12-3/4" BASKET ASSEMBLY, SHORT
2A	2	AM2269	STRIP-TILL BASKET MOUNT, SHORT (18-3/4")
2B	1	AM7568	STRIP-TILL TORSION SPRING ASSEMBLY
2C	1	AM7615	BASKET, STRIPTILL, 12-3/4"
2D	2	AP2144	HCFT205-16 BEARING
2E	4	BP3012	HEX CAP SCREW, 7/16"-14 X 1-1/2", GRADE 5, PLATED
2F	4	BP3016	NUT, HEX, 7/16"-14, GRADE 2, PLATED
2G	4	BP3017	WASHER, LOCK, 7/16", PLATED
2H	4	BP3038	NUT, HEX, 5/8"-11, GRADE 2
2I	4	BP3039	WASHER, LOCK, 5/8", PLATED
2J	2	BP3042	NUT, HEX, 1/2"-13, GRADE 2, PLATED
2K	2	BP3043	WASHER, LOCK, 1/2", PLATED
2L	4	BP3126	HEX CAP SCREW, 1/2"-13 X 1-1/2", GRADE 5, PLATED
2M	2	BP3199	HEX CAP SCREW, 1"-8 X 2-1/2", GRADE 5, PLATED
2N	2	BP3244	NUT, HEX LOCK, 1/2"-13, PLATED
2O	2	BP3300	U-BOLT, 5/8"-11 X 2-1/2" X 4", PLATED
2P	2	BP3446	NUT, HEX LOCK, 1"-8, REVERSIBLE, PLATED
3	1	80310040	TRACKMASTER, 1 EXTRA PAIR OF DISC ASSEMBLIES
3A	1	AAM4714	TRACKMASTER DISC ASSEMBLY
3B	1	AAM4715	TRACKMASTER DISC ASSEMBLY
3C	1	AM4719	ASSEMBLY, DISC STANDARD, RH PITCH, TRACKMASTER
3D	1	AM4720	ASSEMBLY, DISC STANDARD, LH PITCH, TRACKMASTER
3E	2	AM4723	HUB CAP STRAP
3F	2	AP2717	BLADE 22", 6 BOLT
3G	8	BP3034	NUT, HEX, 3/4"-10, GRADE 2, PLATED
3H	8	BP3035	WASHER, LOCK, 3/4", PLATED
3I	4	BP3208	U-BOLT, 3/4"-10 X 6"W X 5-11/16"L, PLATED
4	1	AAM2722	BASKET MOUNT FLAT WITH HARDWARE, 4" X 6"
4A	1	AM7637	BASKET MOUNT PLATE, 4" X 6", STRIPTILL
4B	4	BP3034	NUT, HEX, 3/4"-10, GRADE 2, PLATED
4C	4	BP3035	WASHER, LOCK, 3/4", PLATED
4D	2	BP3208	U-BOLT, 3/4"-10 X 6"W X 5-11/16"L, PLATED

AM4720



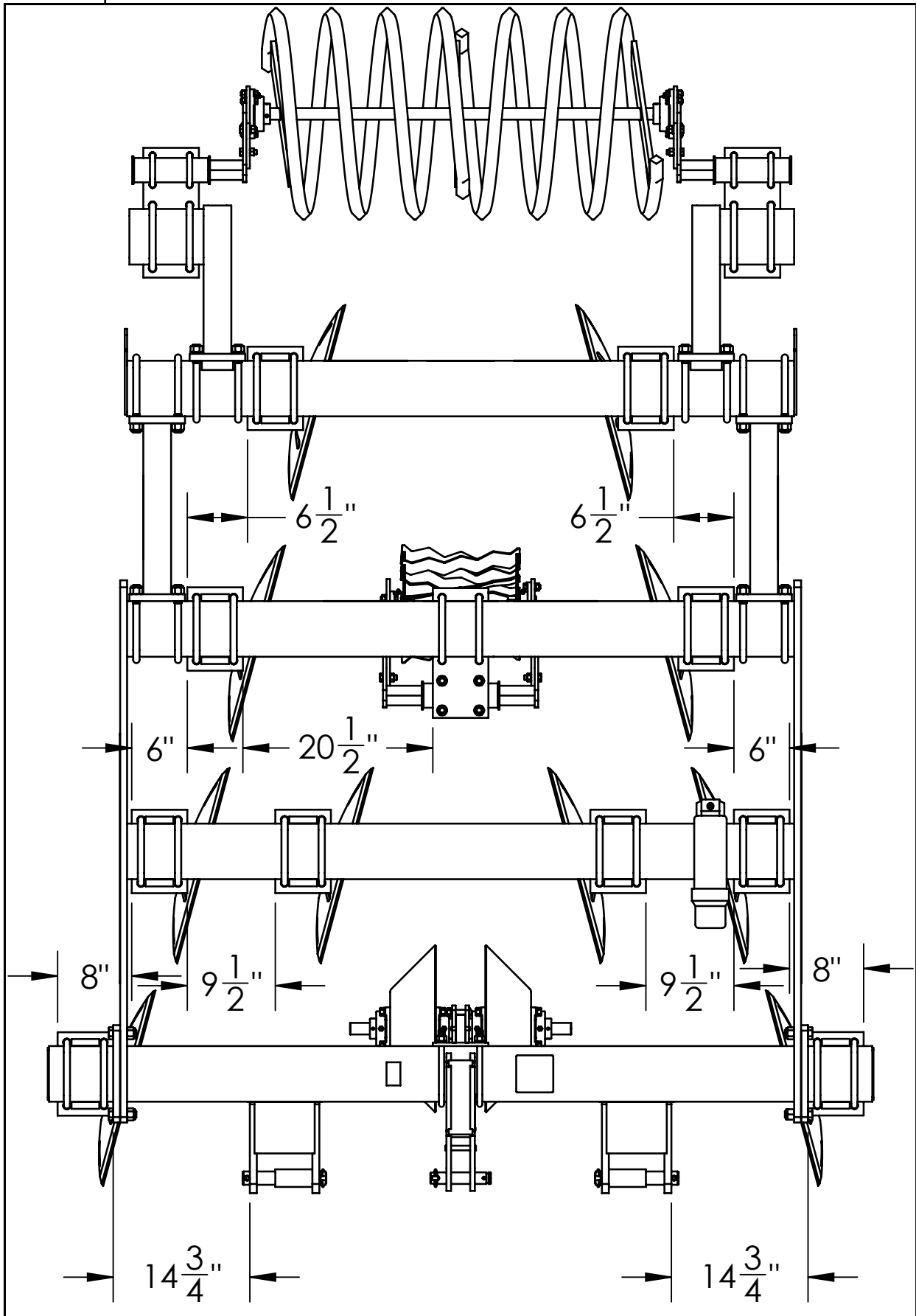
AM4719

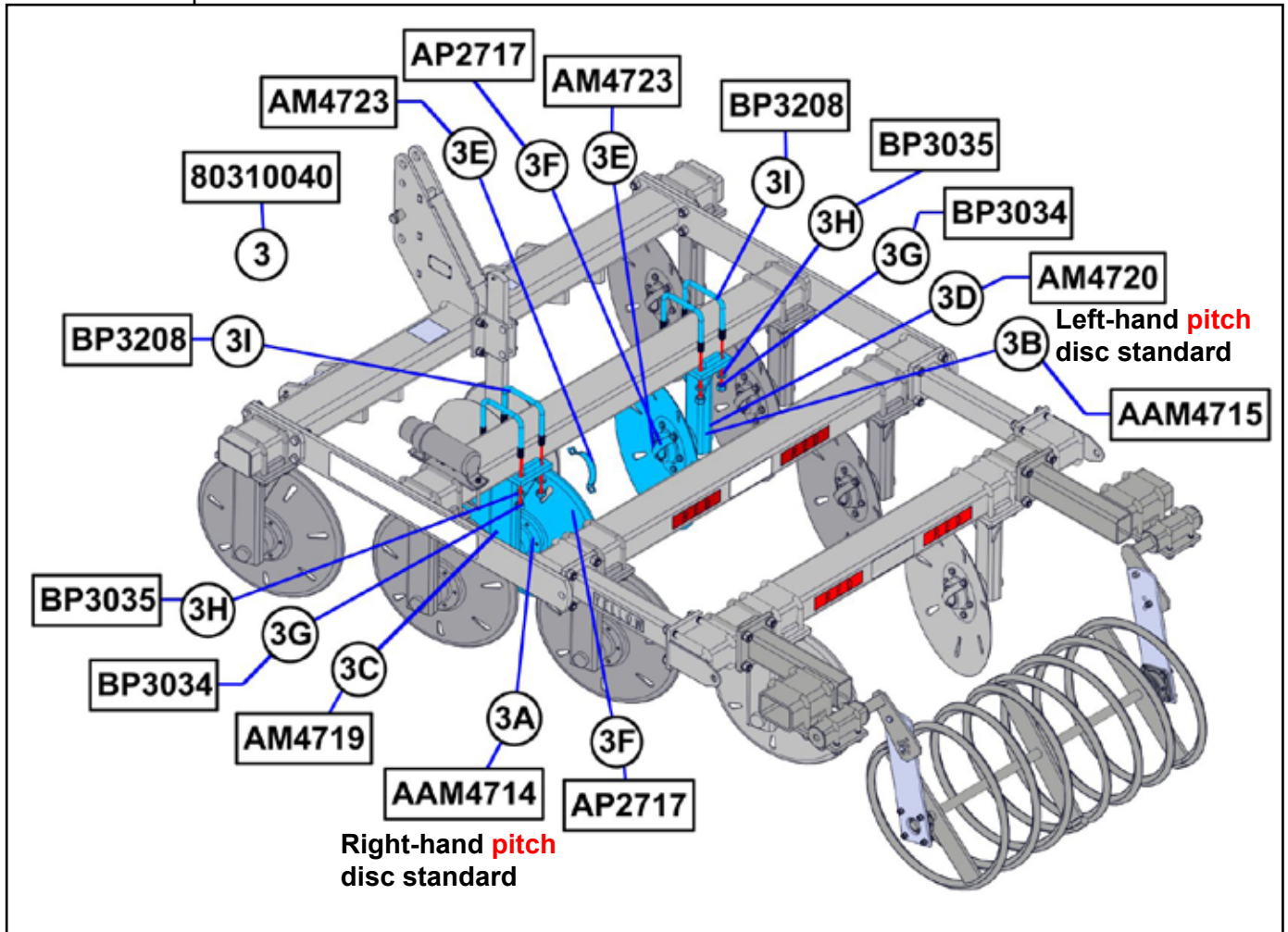




Disc Standards Hub and Spindle Parts

BOM ID	Qty	Item No	Description
1	1	AP2023	BEARING CONE, LM 67048
2	1	AP2028	NUT, SPINDLE, 7/8"-14
3	1	AP2048	HUB CAP, 1513
4	1	AP2082	BEARING CONE, LM 501349
5	1	AP2120	HUB WITH CUPS, 6 BOLT, 6" BOLT CIRCLE, 4.62" PILOT
5A	1	AP2120	HUB W/O CUPS, 6 BOLT, 6" BOLT CIRCLE, 4.62" PILOT, 783 STYLE
5B	1	AP2086	BEARING CUP, LM 501310
5C	1	AP2524	BEARING CUP, LM 67010
5D	1	BP3072	GREASE ZERK, 1/4"-28
6	1	AP2145	GREASE SEAL, DOUBLE LIP, 183003TB
7	1	AP2216	DECAL, BLU-JET, SMALL, 1-1/2" X 4"
8	1	AP2426	PIN, COTTER, 5/32" X 1-3/4"
9	1	AP2427	WASHER, SPINDLE, 2" X 15/16" X .164"
10	6	AP2702	HEX CAP SCREW, 1/2"-20 X 1", GRADE 5, PLATED
11	6	BP3043	WASHER, LOCK, 1/2", PLATED
12	1	EM3391	WELDMENT, DISC STANDARD, RIGHT-HAND PITCH
13	1	EM3390	WELDMENT, DISC STANDARD, LEFT-HAND PITCH

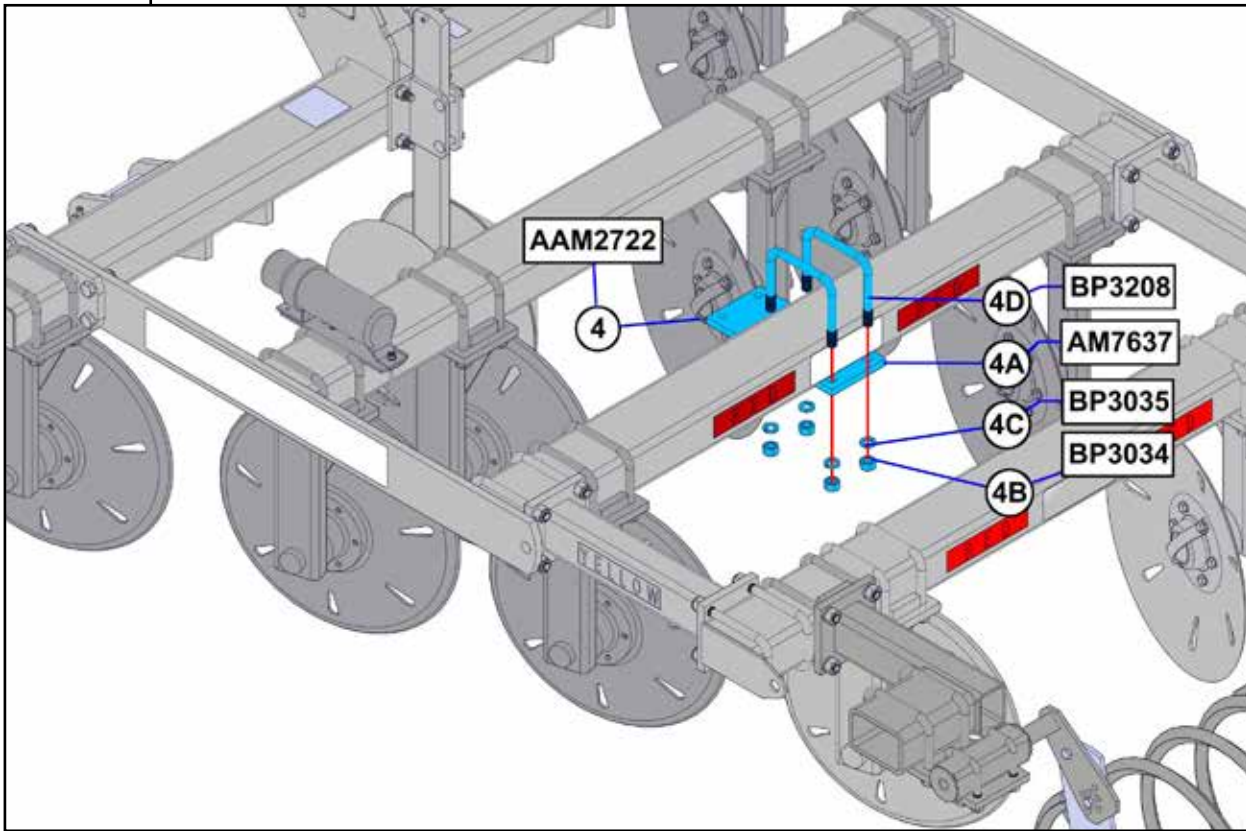




► **Mounting rear disc standards**

1. Mount front Right-hand and Left-hand disc standards on second bar. Consult row spacing drawing for location

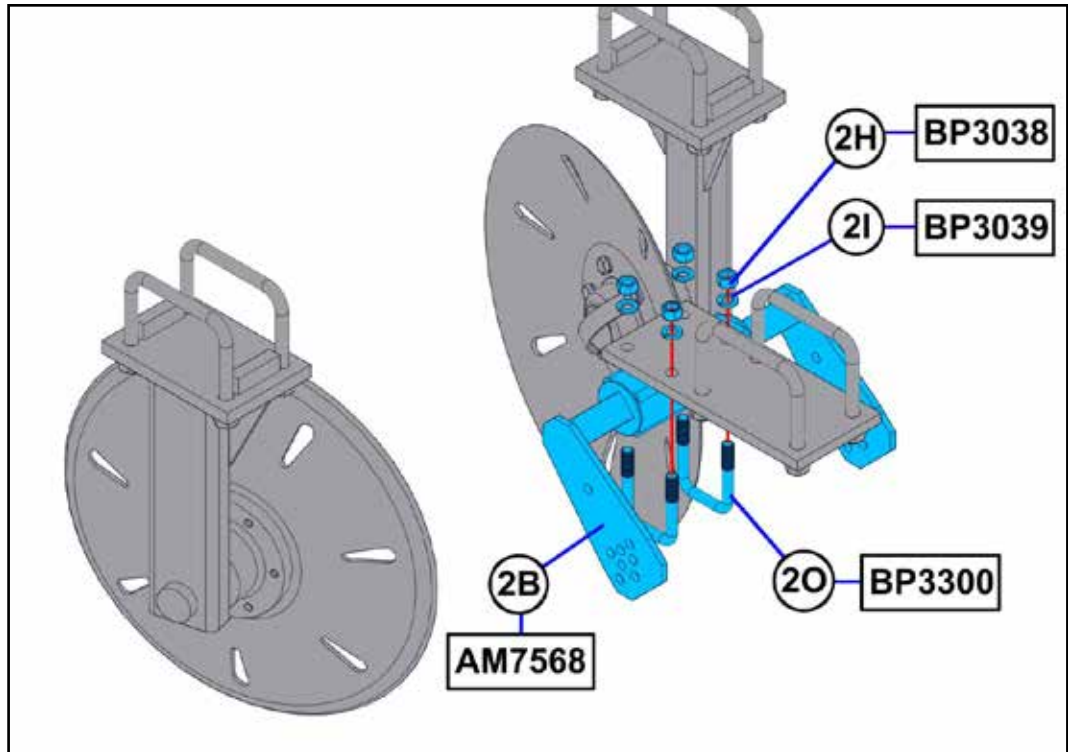
BOM ID	Qty	Item No	Description
3	1	80310040	TRACKMASTER,1 EXTRA PAIR OF DISC ASSEMBLIES
3A	1	AAM4714	TRACKMASTER DISC ASSEMBLY
3B	1	AAM4715	TRACKMASTER DISC ASSEMBLY
3C	1	AM4719	ASSEMBLY, DISC STANDARD, RH PITCH, TRACKMASTER
3D	1	AM4720	ASSEMBLY, DISC STANDARD, LH PITCH, TRACKMASTER
3E	2	AM4723	HUB CAP STRAP
3F	2	AP2717	BLADE 22", 6 BOLT
3G	8	BP3034	NUT, HEX, 3/4"-10, GRADE 2, PLATED
3H	8	BP3035	WASHER, LOCK, 3/4", PLATED
3I	4	BP3208	U-BOLT, 3/4"-10 X 6"W X 5-11/16"L, PLATED



► **Attaching basket mount**

1. Consult row spacing drawing for location and center 4" x 6" basket mount on third bar.

BOM ID	Qty	Item No	Description
4	1	AAM2722	BASKET MOUNT FLAT WITH HARDWARE, 4" X 6"
4A	1	AM7637	BASKET MOUNT PLATE, 4" X 6", STRIPTILL
4B	4	BP3034	NUT, HEX, 3/4"-10, GRADE 2, PLATED
4C	4	BP3035	WASHER, LOCK, 3/4", PLATED
4D	2	BP3208	U-BOLT, 3/4"-10 X 6"W X 5-11/16"L, PLATED



► **Attaching torsion spring assembly**

1. Center torsion spring assembly on flat mounting bracket and secure.

BOM ID	Qty	Item No	Description
2B	1	AM7568	STRIP-TILL TORSION SPRING ASSEMBLY
2H	4	BP3038	NUT, HEX, 5/8"-11, GRADE 2
2I	4	BP3039	WASHER, LOCK, 5/8", PLATED
2O	2	BP3300	U-BOLT, 5/8"-11 X 2-1/2" X 4", PLATED

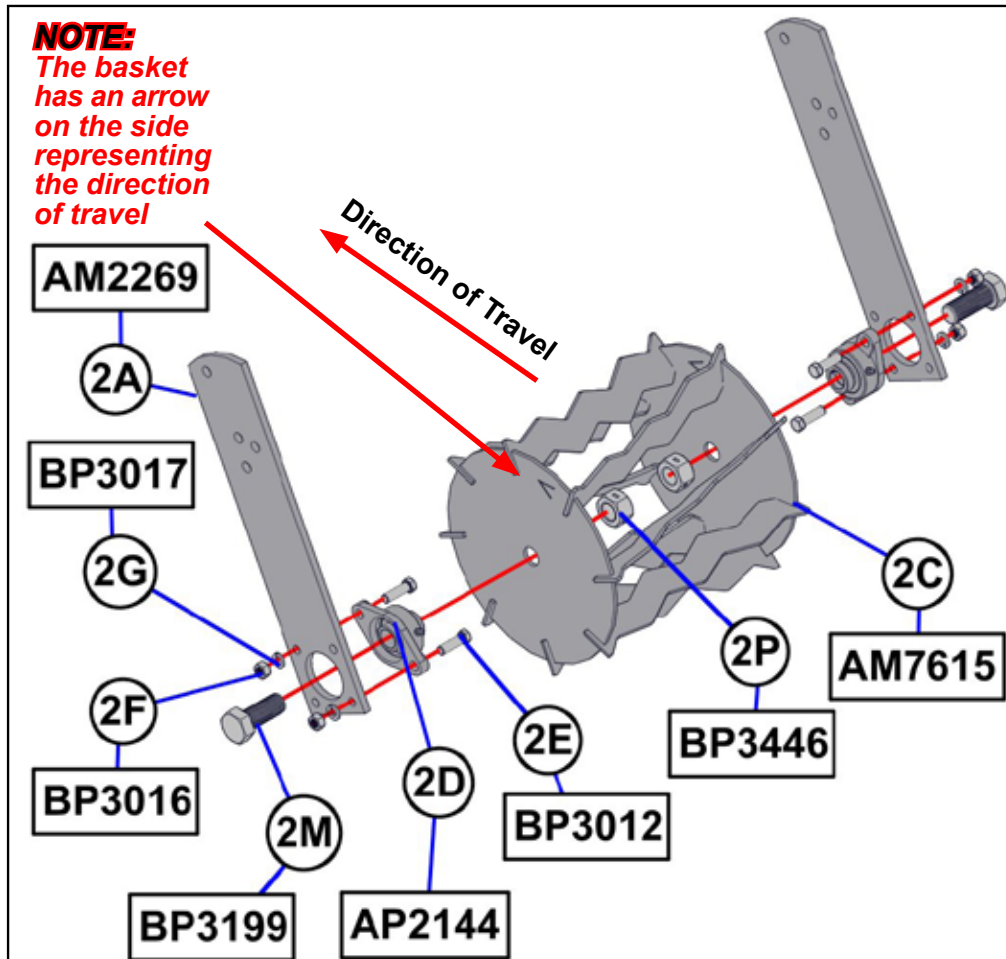
▶ Attaching bearings and chopper basket to mounting arms

▶ **NOTE:**
Bearing lock collars not used

▶ Position chopper basket on torsion spring assembly

▶ **NOTE:**
Bearing lock collars are not used

1. Attach (2D) (AP2144) bearing 1", with/flange on (2A) (AM2269) StripTill basket mounting short 18-3/4" with (2E) (BP3012) 7/16" x 1-1/2" hex cap screws, (2G) (BP3017) 7/16" lock washers and (2F) (BP3016) 7/16" hex nuts. *Do not tighten hex nuts until the basket is installed.* Insert (2M) (BP3199) 1"-8 x 2-1/2" hex cap screw into both bearing arm assemblies.
2. Insert (2C) (AM7615) StripTill basket over 1" x 2-1/2" hex cap screw. Install (2P) (BP3446) 1" center dimple lock nut. Place socket on 1" hex cap screw and tighten. Tighten bearing hex nuts.



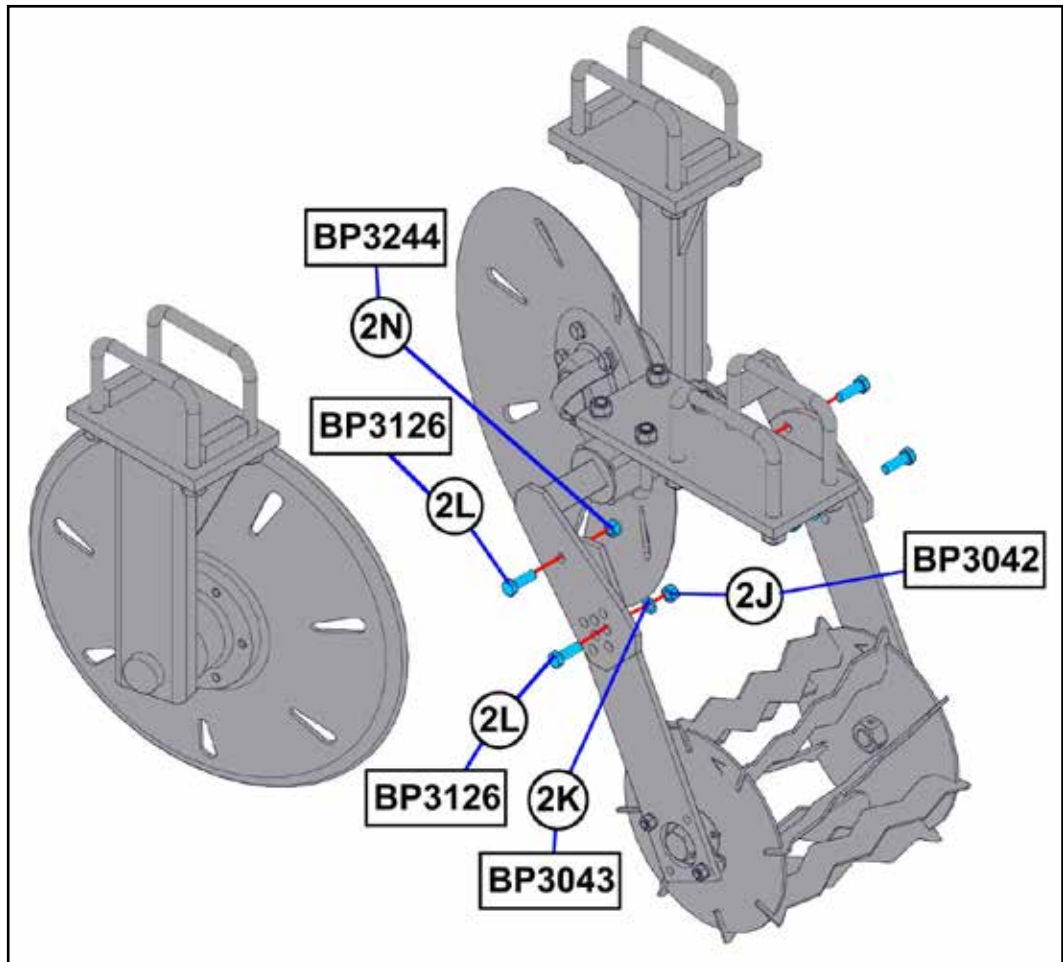
BOM ID	Qty	Item No	Description
2A	2	AM2269	STRIP-TILL BASKET MOUNT, SHORT (18-3/4")
2C	1	AM7615	BASKET, STRIPTILL, 12-3/4"
2D	2	AP2144	HCFT205-16 BEARING
2E	4	BP3012	HEX CAP SCREW, 7/16"-14 X 1-1/2", GRADE 5, PLATED
2F	4	BP3016	NUT, HEX, 7/16"-14, GRADE 2, PLATED
2G	4	BP3017	WASHER, LOCK, 7/16", PLATED
2M	2	BP3199	HEX CAP SCREW, 1"-8 X 2-1/2", GRADE 5, PLATED
2P	2	BP3446	NUT, HEX LOCK, 1"-8, REVERSIBLE, PLATED

▶ Centering chopper basket

▶ **NOTE:**
Insert the basket arms to the inside of the StripTill torsion spring

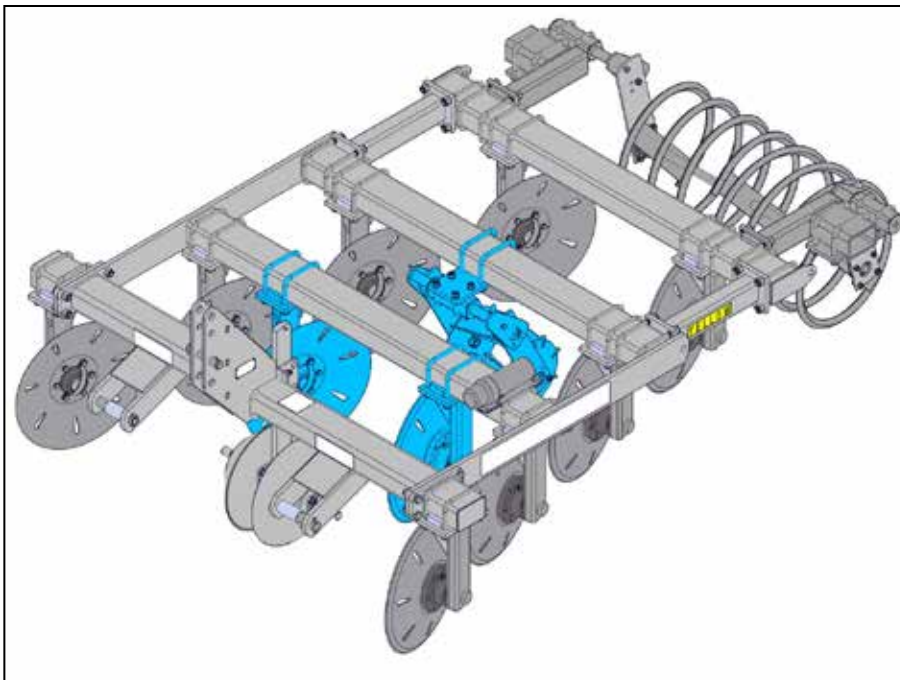
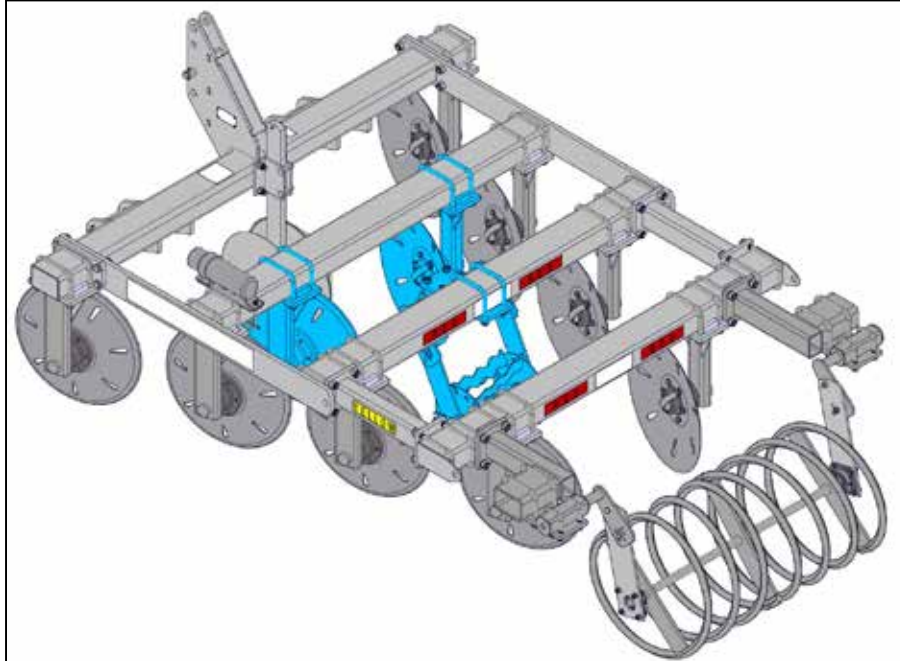
1. Position rolling basket assembly on torsion spring assembly. Insert (2L) (BP3126) 1/2" x 1-1/2" hex cap screws, top and bottom. Secure top pivot hex cap screws with (2N) (BP3244) 1/2" lock hex nuts. Secure lower adjustable hex cap screws with (2K) (BP3043) 1/2" lock washers and (2J) (BP3042) 1/2" hex nuts. Hex nuts may be tightened.

(Diagram shows a starting position.)



BOM ID	Qty	Item No	Description
2J	2	BP3042	NUT, HEX, 1/2"-13, GRADE 2, PLATED
2K	2	BP3043	WASHER, LOCK, 1/2", PLATED
2L	4	BP3126	HEX CAP SCREW, 1/2"-13 X 1-1/2", GRADE 5, PLATED
2N	2	BP3244	NUT, HEX LOCK, 1/2"-13, PLATED

TrackMaster II PackerPro



ThurstonTM Manufacturing Company



Thurston Manufacturing Company • 1708 H Ave • Box 218 • Thurston, Nebraska, 68062-0218
Phone: 402-385-3041 • **Fax:** 402-385-3043 • **E-mail:** box218@thurstonmfgco.com

Design specifications and features as described are subject to change without notice. BLU-JET is a registered trademark of Thurston Manufacturing Company, Thurston NE.