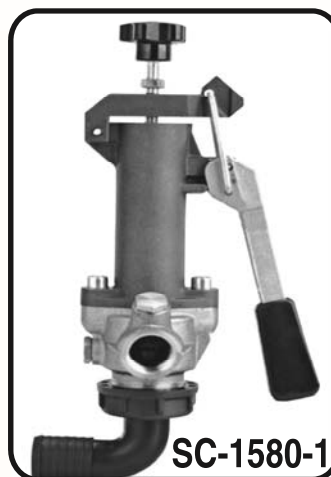
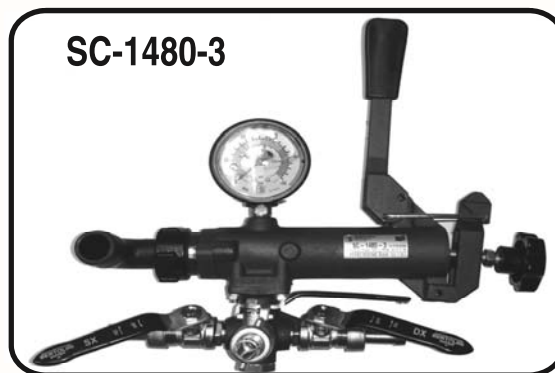


# SC-1066-2 – SC-1240-3 – SC-1480-3 SC-1580-1 – SC-1132-2 PRESSURE REGULATORS Parts & Instruction Manual



## **CDS-JOHN BLUE COMPANY**

DIVISION OF ADVANCED SYSTEMS TECHNOLOGY, INC.

165 Electronics Blvd., • Huntsville, Alabama 35824

Telephone: (256) 721-9090 • FAX (256) 721-9091 • Toll Free: 1-800-253-2583



## **SAFETY PRECAUTIONS**

- Equipment should be operated only by trained, responsible people!
- A careful operator is the best insurance against an accident.
- Fill system with WATER first and check output.
- Check all valves, fittings, hose clamps, etc. for tightness and soundness before admitting fluid to system.
- Replace hoses when worn, cracked or if leaking.

### **BE CAREFUL! REMEMBER, SAFETY IS NO ACCIDENT**

#### **TO THE OWNER**

This manual has been prepared and illustrated to assist you in the maintenance of your CDS-JOHN BLUE PUMP.

Enter your serial number and date of purchase in the space provided below for future reference in service information or for ordering parts.

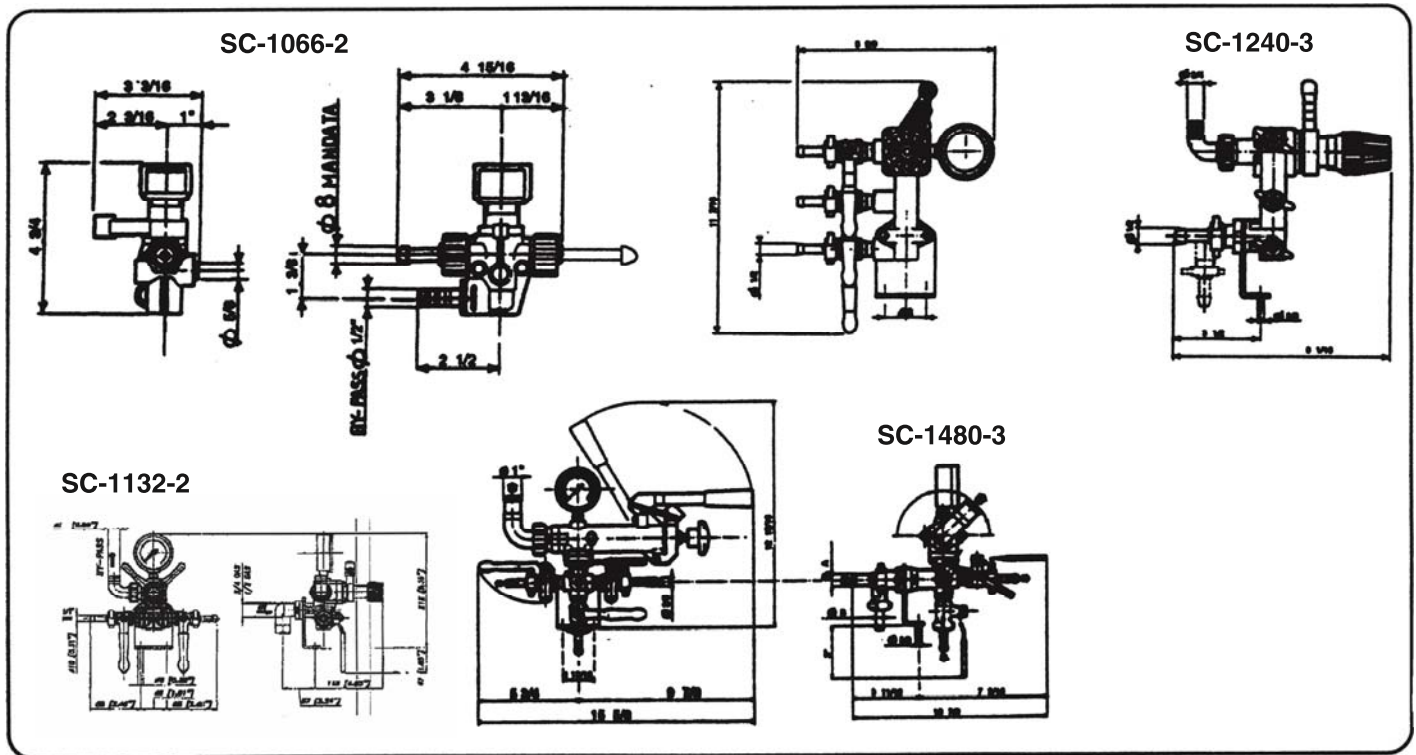
Because our engineering department is constantly improving products, we reserve the right to make design and specification changes without notice.

Serial No.

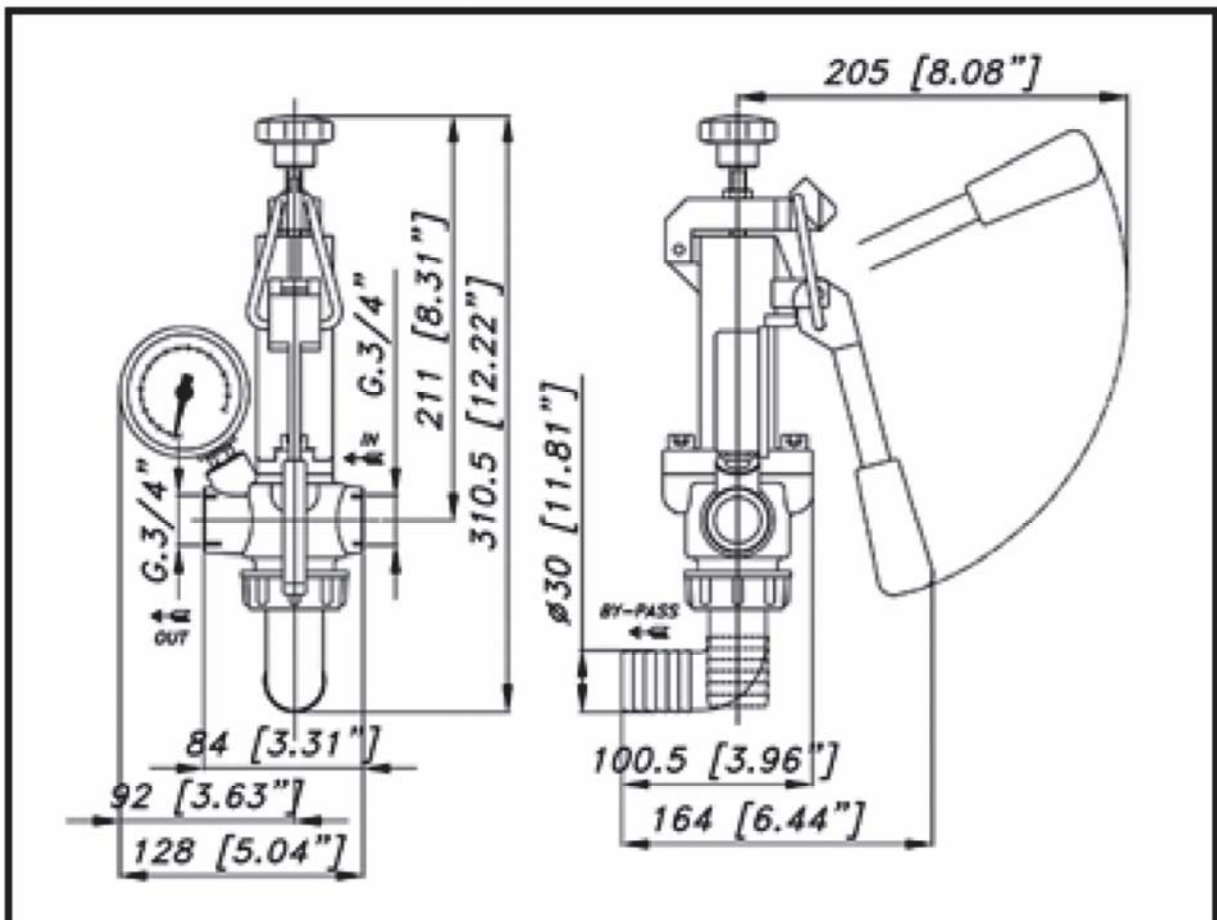
Purchase Date

**WARNING:** USE OF THIS PRODUCT FOR ANY PURPOSES OTHER THAN IT'S ORIGINAL INTENT, ABUSE OF THE PRODUCT, AND/OR MODIFICATION TO THE ORIGINAL PRODUCT IS STRICTLY PROHIBITED BY CDS-JOHN BLUE COMPANY. CDS-JOHN BLUE COMPANY RESERVES THE RIGHT TO DENY WARRANTY OR LIABILITY CLAIMS IN ANY/ALL SITUATIONS INVOLVING MISUSE, ABUSE OR MODIFICATION.

## SC-1066-2 – SC-1240-3 – SC-1480-3 SC-1132-2 DIMENSIONS



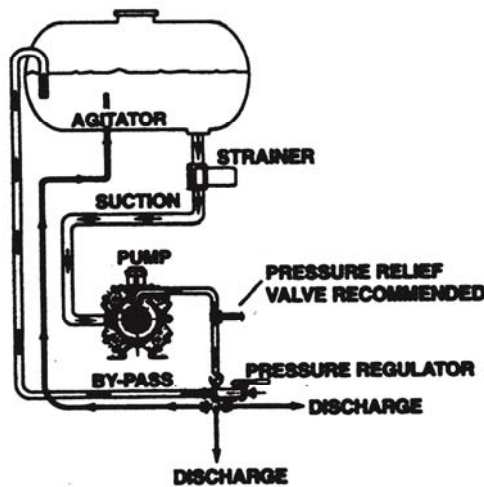
## SC-1580-1 DIMENSIONS



# INSTALLATION AND GENERAL SAFETY INFORMATION

- 1) When in the area of spray pump and/or control, always wear eye protection and protective clothing.
- 2) Use of a pressure relief valve on the discharge side of the pump is required to prevent damage from pressure build up.
- 3) Always consult the label of any solution or additive to be pumped before operating the system.
- 4) Inspect all hoses for wear and weak areas before each use.

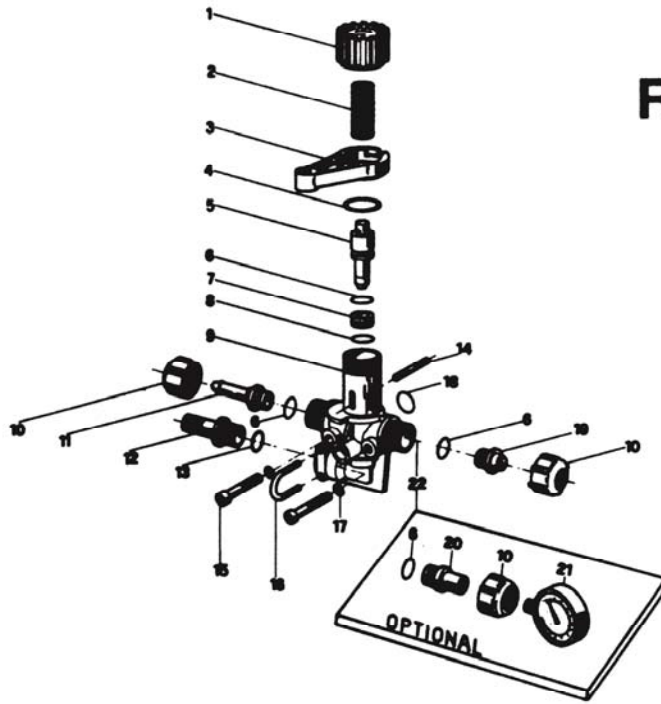
## TYPICAL INSTALLATION DIAGRAMS



## OPERATION INSTRUCTIONS

- 1) Before starting unit, turn the valve lever counter-clockwise to the dump position (by-pass flow). **FAILURE TO FOLLOW THIS WILL VOID THE WARRANTY ON THE PUMP.**
- 2) Turn the adjustment knob counter-clockwise to reduce pressure to "0" psi. In the initial start-up this is absolutely recommended. It is not necessary in the daily operations.
- 3) When valve is in the by-pass line, start the unit and let it run for at least 2 minutes or until oil is displaced in the cylinder and air is evacuated from the circuit.
- 4) Turn the valve lever clockwise to pressure position, close the spray gun or the spray boom, turn the adjustment knob clockwise until the operating pressure is achieved, open the spray gun or spray boom, and start spraying.

# SC-1066-2 Regulator-Control

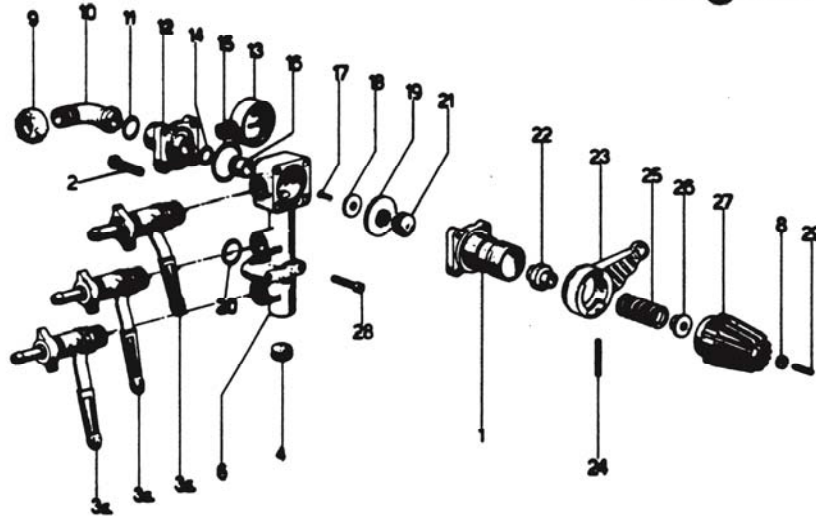


## REGULATOR CONTROL MODEL SC-1066-2 PARTS LIST

❖ Valve Kit Order SC-94988997

| ITEM | PART NUMBER | DESCRIPTION                  | QTY. |
|------|-------------|------------------------------|------|
| 1    | SC-94020332 | KNOB                         | 1    |
| 2    | SC-94007348 | SPRING                       | 1    |
| 3    | SC-94020232 | LEVER                        | 1    |
| 4    | DP-82001000 | O-RING                       | 1    |
| 5    | SC-94020432 | VALVE                        | 1    |
| ❖ 6  | SC-80317400 | O-RING 112-D.9, 92X2, 62     | 4    |
| 7    | SC-05006851 | SEAT D.8                     | 1    |
| ❖ 8  | SC-80305600 | O-RING 1, 78X8, 73           | 1    |
| 9    | SC-94020032 | PRESSURE REGULATOR BODY      | 1    |
| 10   | DP-82001000 | CAP NUT                      | 2    |
| 11   | SC-84154400 | STRAIGHT CONNECTOR           | 1    |
| 12   | SC-84155100 | STRAIGHT CONNECTOR D.13      | 1    |
| ❖ 13 | SC-80317800 | O-RING                       | 1    |
| 14   | SC-85104500 | PARALLEL PIN D. 3X30         | 1    |
| 15   | SC-86194390 | SCREW M5X45                  | 2    |
| 16   | SC-94020649 | U-BOLT                       | 1    |
| 17   | SC-84354200 | WASHER 5M                    | 2    |
| ❖ 18 | SC-80321700 | O-RING                       | 1    |
| 19   | SC-94020132 | PRESSURE REGULATOR PLUG      | 1    |
| 20   | SC-94020732 | NIPPLES G 1/2" - G 1/4"      | 1    |
| 21   | SC-83001000 | PRESSURE GAUGE               | 1    |
| 22   | SC-94984997 | PRESSURE GAUGE FOR N.P.R. 20 | 1    |

# SC-1240-3 Regulator-Control



## REGULATOR CONTROL MODEL SC-1240-3 PARTS LIST

❖ Valve Kit Order SC-93989297

| ITEM | PART NUMBER  | DESCRIPTION                     | QTY. |
|------|--------------|---------------------------------|------|
| 1    | SC-26020809  | CAP                             | 1    |
| 2    | SC-86235000  | SCREW T.E. M6X45                | 4    |
| 3    | SC-84554410* | SPRAY VALVE LH                  | 3    |
| 4    | SC-85258500  | PLUG                            | 2    |
| 6    | SC-26021109  | PRESSURE REGULATOR BODY         | 1    |
| 8    | SC-81454200  | HEXAGON NUT M6                  | 1    |
| 9    | SC-82004210  | WING NUT G 3/4                  | 1    |
| 10   | SC-84052100  | 90° ELBOW TAIL                  | 1    |
| ❖ 11 | SC-80306000  | O-RING D.1, 78X12, 42           | 1    |
| 12   | SC-26021509  | REGULATOR BODY OUTLET SIDE      | 1    |
| 13   | SC-83008000  | PRESSURE GAUGE GLYCERINE FILLED | 1    |
| ❖ 14 | SC-80309000  | O-RING D. 2X16                  | 1    |
| ❖ 15 | SC-80320830  | O-RING D. 2, 62X36, 14          | 1    |
| 16   | SC-26021351  | ADJUSTING VALVE SEAT            | 1    |
| 17   | SC-86193100  | STAINLESS STEEL SCREW M5X12     | 1    |
| 18   | SC-26020151  | SPACER                          | 1    |
| ❖ 19 | SC-26018931  | DIAPHRAGM                       | 1    |
| ❖ 20 | SC-80321800  | O-RING DIA. 3/22                | 1    |
| 21   | SC-26020353  | PISTON                          | 1    |
| 22   | SC-26020232  | PLUNGER                         | 1    |
| 23   | SC-26020732  | LEVER                           | 1    |
| 24   | SC-85116100  | PIN                             | 1    |
| 25   | SC-26021248  | SPRING                          | 1    |
| 26   | SC-26020451  | SPRING WASHER                   | 1    |
| 27   | SC-26020532  | ADJ. KNOB                       | 1    |
| 29   | SC-86214000  | SCREW S.T.E.I. M6X207           | 1    |

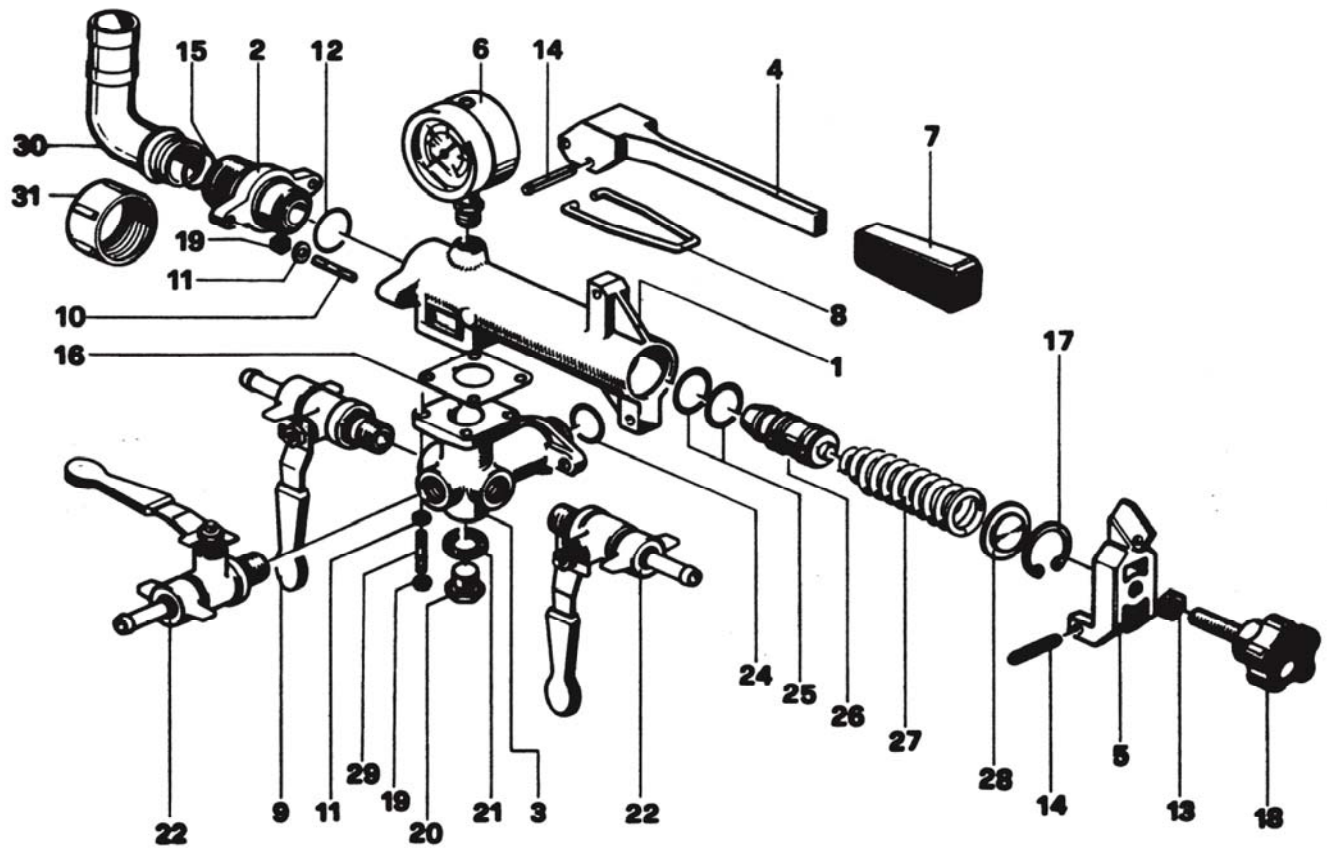
\*NUT & BARB NOT INCLUDED

BARB = SC-84154400 (OUTLET STRAIGHT PORT)

NUT = DP-82001000 (WING NUT)



# SC-1480-3 Regulator-Control





# REGULATOR CONTROL MODEL SC-1480-3

## PARTS LIST

❖ Valve Kit Order SC-98986697

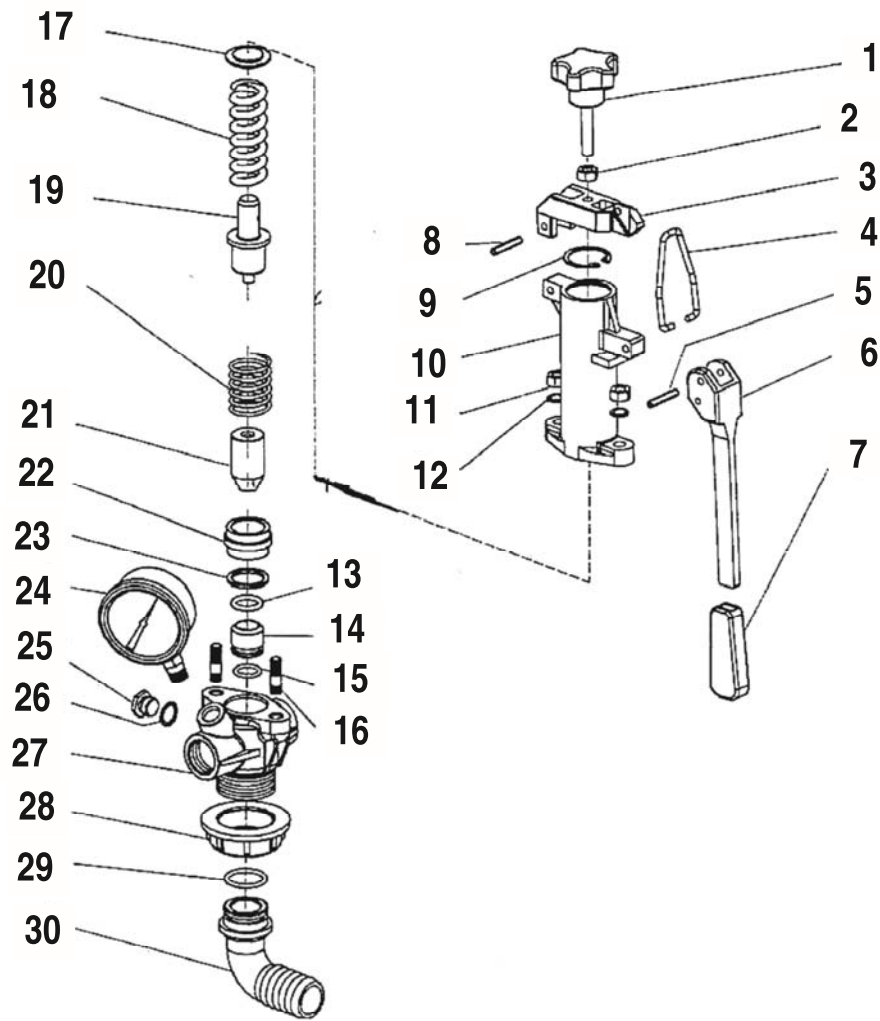
| ITEM | PART NUMBER  | DESCRIPTION                     | QTY. |
|------|--------------|---------------------------------|------|
| 1    | SC-98018908  | VALVE BODY                      | 1    |
| 2    | SC-98986297  | SEAT-DISCHARGE CONNECTION       | 1    |
| 3    | SC-98019008  | VALVE CONNECTION                | 1    |
| 4    | SC-98019509  | PRESSURE ADJUSTING VALVE LEVER  | 1    |
| 5    | SC-98019409  | VALVE ARM                       | 1    |
| 6    | SC-83008000  | PRESSURE GAUGE GLYCERINE FILLED | 1    |
| 7    | SC-82840450  | KNOB                            | 1    |
| 8    | SC-70009948  | TIE BOLT                        | 1    |
| 9    | SC-84554400  | SPRAY VALVE -RH                 | 1    |
| 10   | SC-83800600  | STUD M 5X18                     | 2    |
| 11   | SC-84355700  | WASHER D.5                      | 6    |
| ❖ 12 | SC-80310400  | O-RING D. 2X25                  | 1    |
| 13   | SC-81457500  | NUT M8                          | 1    |
| 14   | SC-85118700  | SPRING PIN                      | 2    |
| ❖ 15 | SC-80320000  | O-RING DIA. 2, 62X22, 22        | 1    |
| ❖ 16 | SC-98019972  | GASKET                          | 1    |
| 17   | SC-80124600  | SNAP RING                       | 1    |
| 18   | SC-83752800  | KNOB                            | 1    |
| 19   | SC-81452500  | NUT M5                          | 6    |
| 20   | DP-85257953  | PLUG G 3/8                      | 1    |
| 21   | SC-82410700  | GASKET 16, 5X23X1               | 1    |
| 22   | SC-84554410* | SPRAY VALVE - LH                | 2    |
| ❖ 24 | SC-80321800  | O-RING DIA. 3X22                | 1    |
| ❖ 25 | SC-80318700  | GASKET 123 - 17, 86X2, 62       | 2    |
| 26   | SC-98019743  | SHUTTER DN23                    | 1    |
| 27   | SC-98019849  | SPRING                          | 1    |
| 28   | SC-98019648  | WASHER                          | 1    |
| 29   | SC-83800500  | STUD M5X14                      | 4    |
| 30   | SC-84054200  | 90° ELBOW TAIL                  | 1    |
| 31   | SC-82004900  | WING NUT M34                    | 1    |

\*NUT & BARB NOT INCLUDED

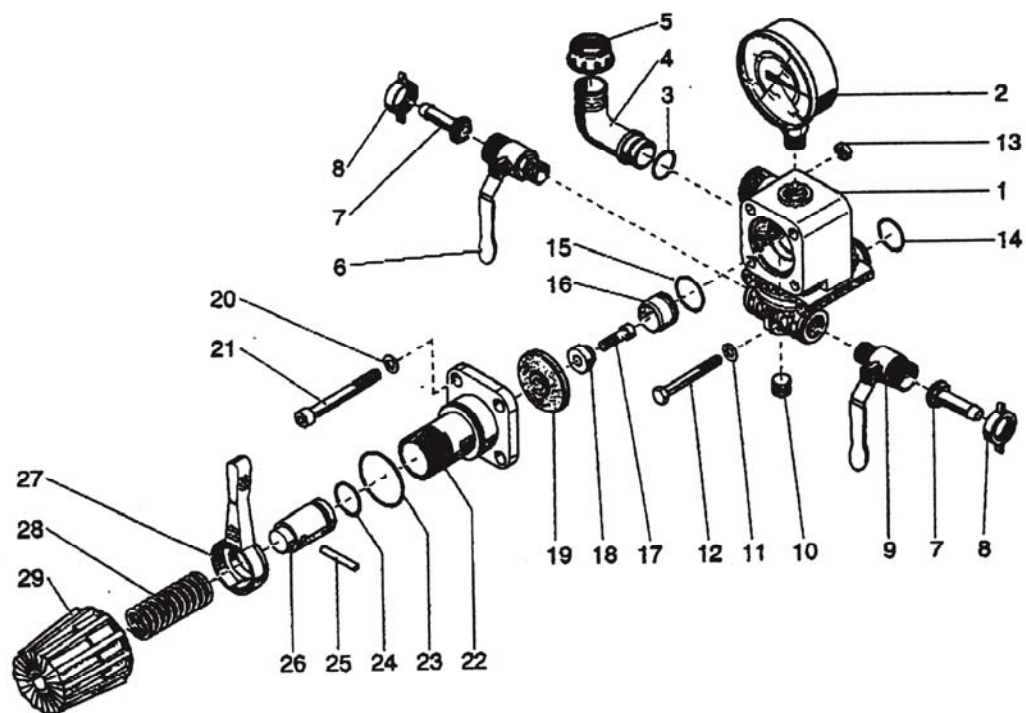
BARB = SC-84154400

NUT = DP-82001000

# SC-1580-1 Pressure Regulator



| PRESSURE REGULATOR PARTS LIST FOR SC-1580-1 |             |                     |     |  |
|---|-------------|---------------------|-----|--|
|   |             |                     |     |  |
| * SC-24980397 - REPAIR KIT                  |             |                     |     |  |
|   |             |                     |     |  |
| ITEM  | PART NUMBER | DESCRIPTION         | QTY |  |
| 1   | SC-83752800 | KNOB                | 1   |  |
| 2   | SC-81457500 | NUT                 | 1   |  |
| 3   | SC-98019409 | VALVE ARM           | 1   |  |
| 4   | SC-70009948 | CLIP                | 1   |  |
| 5   | SC-85118700 | PIN                 | 1   |  |
| 6   | SC-91017209 | LEVER               | 1   |  |
| 7   | SC-82840450 | KNOB                | 1   |  |
| 8   | SC-85118700 | PIN                 | 1   |  |
| 9   | SC-80124600 | SNAP RING           | 1   |  |
| 10  | SC-24600208 | BODY                | 1   |  |
| 11  | SC-81457500 | NUT                 | 1   |  |
| 12  | DP-84368500 | WASHER              | 1   |  |
| * 13  | SC-80324400 | O-RING              | 1   |  |
| * 14  | SC-73032643 | VALVE SEAT          | 1   |  |
| * 15  | PP-80318700 | GASKET              | 1   |  |
| 16  | SC-83813300 | STUB                | 2   |  |
| 17  | SC-98019648 | WASHER              | 1   |  |
| 18  | SC-24600548 | SPRING              | 1   |  |
| 19  | SC-24600348 | PIN                 | 1   |  |
| 20  | SC-31071151 | SPRING              | 1   |  |
| * 21  | SC-24601251 | CERAMIC POPPET      | 1   |  |
| 22  | SC-24600653 | WASHER              | 1   |  |
| * 23  | SC-73032867 | O-RING              | 1   |  |
| 24  | SC-83006600 | SS PRESSURE GAUGE   | 1   |  |
| 25  | DP-85254350 | PLUG                | 1   |  |
| 26  | DP-82407900 | GASKET              | 1   |  |
| 27  | SC-24600112 | VALVE BODY          | 1   |  |
| 28  | DP-82006750 | BARB NUT            | 1   |  |
| * 29  | DP-80321900 | O-RING              | 1   |  |
| 30  | DP-84056000 | 90 DEGREE HOSE BARB | 1   |  |



# REGULATOR CONTROL MODEL SC-1132-2

## PARTS LIST

| VALVE KIT ORDER SC-25996397 |             |                          |      |
|-----------------------------|-------------|--------------------------|------|
| ITEM                        | PART NUMBER | DESCRIPTION              | QTY. |
|                             |             |                          |      |
| 1                           | SC-24031032 | VALVE HOUSING            | 1    |
| 2                           | SC-83008000 | PRESSURE GAUGE 0-100 BAR | 1    |
| 2                           | SC-83001000 | PRESSURE GAUGE 0-24 BAR  | 1    |
| ❖ 3                         | SC-80306000 | O-RING                   | 1    |
| 4                           | SC-84052100 | 90 DEGREE ELBOW CONN.    | 1    |
| 5                           | SC-82004210 | WING NUT                 | 1    |
| 6                           | DP-84554410 | LEFT TAP                 | 1    |
| 7                           | SC-84154400 | OUTLET STRAIGHT PORT     | 2    |
| 8                           | DP-82001000 | WING NUT                 | 2    |
| 9                           | DP-84554400 | RIGHT TAP                | 1    |
| 10                          | DP-85258500 | CAP                      | 1    |
| 11                          | DP-84358500 | WASHER                   | 2    |
| 12                          | SC-86241400 | SCREW                    | 2    |
| 13                          | SC-81452500 | NUT                      | 4    |
| ❖ 14                        | DP-80321800 | O-RING                   | 1    |
| ❖ 15                        | SC-80305900 | O-RING                   | 1    |
| ❖ 16                        | SC-24032051 | VALVE SEAT               | 1    |
| 17                          | SC-86184150 | SCREW                    | 1    |
| ❖ 18                        | SC-24031951 | POPPET                   | 1    |
| ❖ 19                        | SC-24031336 | HPS DIAPHRAGM            | 1    |
| 20                          | DP-84353900 | WASHER                   | 4    |
| 21                          | SC-86194420 | SCREW                    | 4    |
| ❖ 22                        | SC-24031132 | FLANGE                   | 1    |
| 23                          | SC-80307500 | O-RING                   | 1    |
| ❖ 24                        | SC-80317500 | O-RING                   | 1    |
| 25                          | SC-85114800 | PIN                      | 1    |
| 26                          | SC-24031453 | GUIDING PISTON           | 1    |
| 27                          | SC-24031232 | LEVER                    | 1    |
| 28                          | SC-24031648 | SPRING 40 BAR            | 1    |
| 28                          | SC-24055048 | SPRING 15 BAR            | 1    |
| 29                          | SC-24032132 | KNOB                     | 1    |

## LIMITED WARRANTY

THIS WARRANTY IS IN LIEU OF ALL OTHER WRITTEN OR EXPRESS WARRANTIES AND REPRESENTATIONS. ANY IMPLIED WARRANTIES INCLUDING MERCHANTABILITY OR FITNESS FOR ANY PARTICULAR PURPOSE ARE EXPRESSLY LIMITED TO THIS WRITTEN WARRANTY. CDS-JOHN BLUE COMPANY SHALL NOT BE LIABLE FOR CONSEQUENTIAL DAMAGES.

Use of this product for any purpose other than its original intent, abuse of the product, and/or any modification to the original product is strictly prohibited by the manufacturer, CDS-John Blue Company. Any modification to the product should be approved by CDS-John Blue prior to use. CDS-John Blue Company will deny Warranty claims and liability in any situation involving misuse, abuse or modification.

Each new machine or component manufactured by CDS-John Blue Company through original buyer is warranted by CDS-John Blue Company to buyer and to any party or parties to whom buyer may resell, lease or lend the equipment to be free from defects in material and workmanship under normal use and service. This obligation of CDS-John Blue Company under this warranty is limited to the repair or replacement of defective parts or correction of improper workmanship of an parts of such equipment which shall within one year from the date of CDS-John Blue's original delivery thereof, be returned to CDS-John Blue's factory, transportation charges prepaid and which CDS-John Blue Company shall determine to its satisfaction upon examination thereof to have been thus defective. When it is impractical to return the defective parts of such equipment to CDS-John Blue's factory, then CDS-John Blue shall have no liability for the labor cost involved in repairing or replacing any such parts and shall be liable solely for supplying the material necessary to replace or repair the defective parts, provided that prior thereto CDS-John Blue Company shall have determined to its satisfaction that any such parts are thus defective.

This warranty shall not apply to any equipment which shall have been repaired or altered outside CDS-John Blue's factory in any way so as to affect its durability, nor which has been subjected to misuse, abuse, negligence or accident or operated in any manner other than in accordance with operating instructions provided by CDS-John Blue Company. This warranty does not extend to repairs made necessary by the use of inferior or unsuitable parts or accessories, or parts or accessories not recommended by CDS-John Blue Company.

CDS-John Blue Company makes no warranties in respect to parts, accessories, or components not manufactured by CDS-John Blue Company, same ordinarily being warranted separately by their respective manufacturers.

DIVISION OF ADVANCED SYSTEMS TECHNOLOGIES

HUNTSVILLE, AL

(256) 721-9090



## CDS-JOHN BLUE COMPANY

DIVISION OF ADVANCED SYSTEMS TECHNOLOGY, INC.

165 Electronics Blvd., • Huntsville, Alabama 35824

Telephone: (256) 721-9090 • FAX (256) 721-9091 • Toll Free: 1-800-253-2583

YOUR LOCAL DEALER

