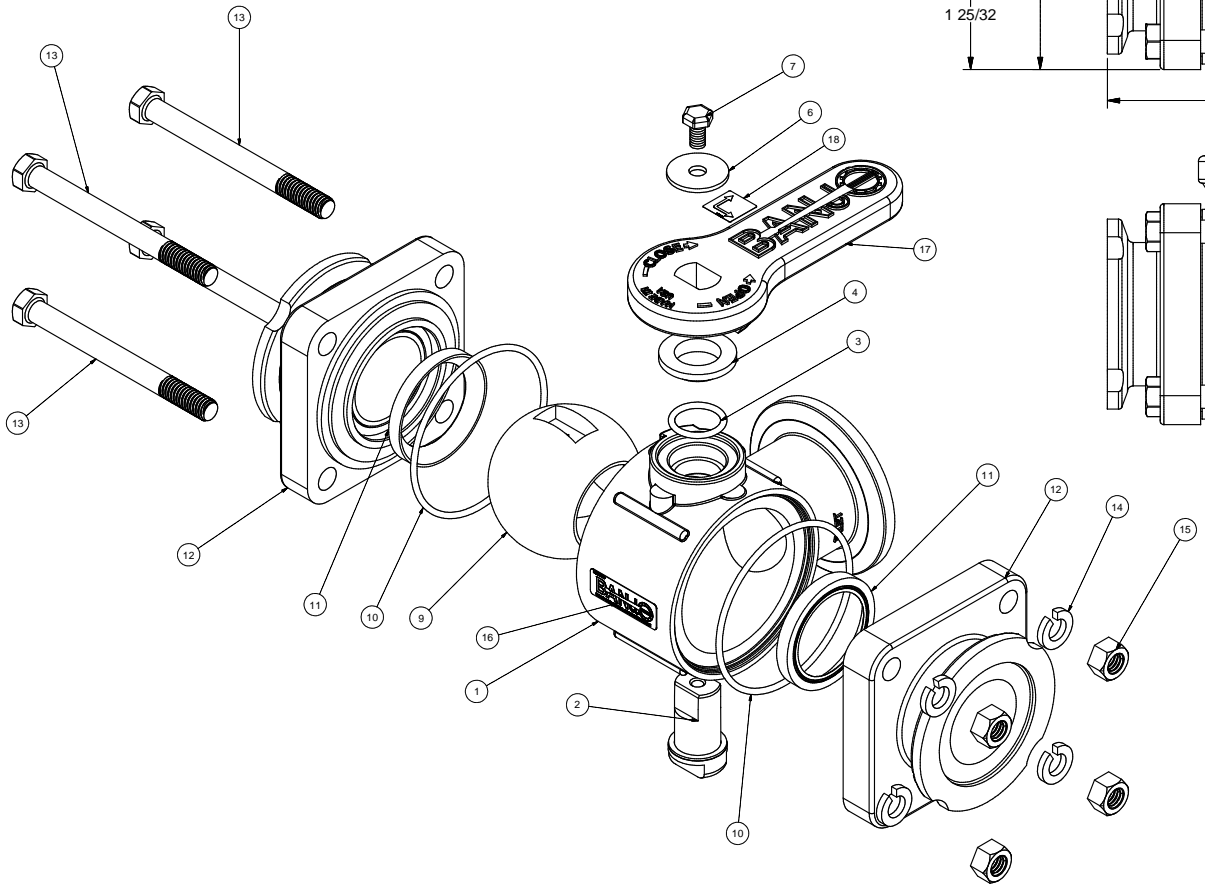


Parts List			
ITEM	QTY	PART NUMBER	DESCRIPTION
1	1	MV20354S	2" SL Manifold Body, Machined
2	1	V20151M	VALVE STEM W/ BEARING
3	1	V20163	#116 O'RING, FKM
4	1	V20159	2" STEM BUSHING
6	1	V20021	Handle Washer
7	1	V20020	2" handle Bolt
9	1	V20355S	2" 3-Way SL Ball
10	2	VE20264	2-150 O'RING, FKM
11	2	VE20258A	2" VE Seat TFM
12	2	V20394	2" Manifold SL/BL Endplate
13	4	V20017	3/8-16 X 4" HHCS
14	4	V20018	3/8" LOCKWASHER
15	4	V20019	3/8" HEX NUT
16	1	050DECAL	Banjo Logo Decal
17	1	V20153SH	HANDLE, SHORT
18	1	VL200SL	VE "OPEN" Sticker



THIS DRAWING AND ALL INFORMATION CONTAINED THEREON ARE THE EXCLUSIVE PROPERTY OF BANJO CORPORATION.
UNLESS SPECIFICALLY NOTED, THIS DRAWING AND ITEMS SHOWN ON THIS DRAWING ARE SUBJECT TO CHANGE AT ANY TIME.

BANJO CORPORATION
 150 BANJO DRIVE, CRAWFORDSVILLE, IN 47933
 WEB SITE: WWW.BANJOCORP.COM
 E-MAIL: BANJOSALES@IDEXCORP.COM

DESCRIPTION: 2" SL Manifold 3 Way Valve
 PART NUMBER: MV200SL