



General Duty Electric Motor Driven Centrifugal Pump

ACH-55-1PH-TEFC



- For Most Industrial and Agricultural Blending, Mixing, Seed Treating and Liquid Transfer Applications
- Suction 1-1/4" Discharge 1"
- Heavy Duty Easily Replaceable Mechanical Seal
- 3/4" H.P. 3450 RPM Totally Enclosed Fan Cooled Electric Motor
- Chemical Resistant Valox or Optional Cast Iron Impeller
- All Cast Iron Housing
- For Use in All Dusty, Dirty, or Weather Exposed Locations

PERFORMANCE CHART

PRESSURE PSI	FLOW GPM	FLOW GPH
30	10	600
25	20	1200
23	30	1800
19	40	2400

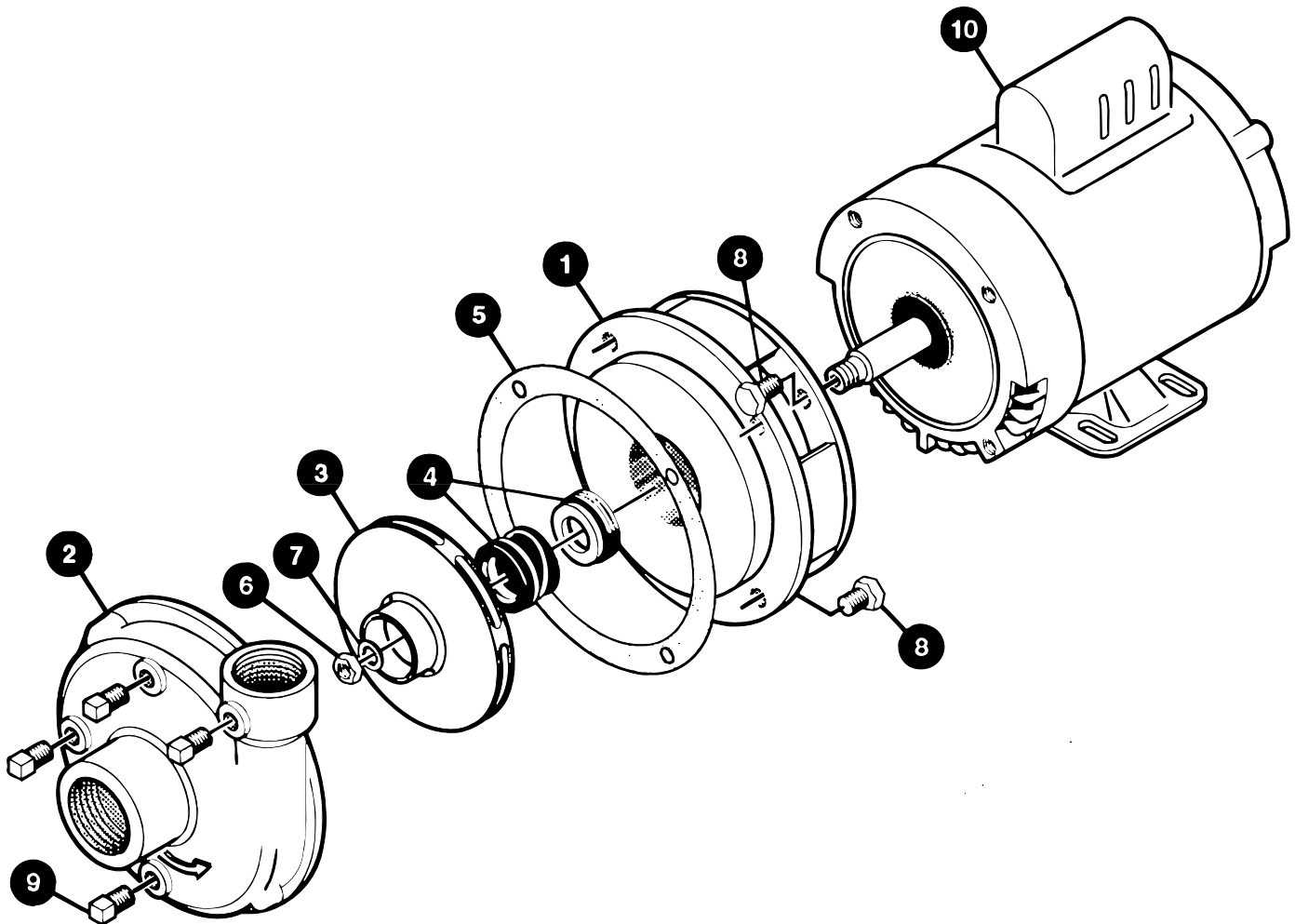
Data based on 1 foot lift through unrestricted suction hose and fittings with full 1-1/4" I.D.

DIMENSIONS

REF.	DIM. (inches)
A	3-1/2
B	3
C	3-7/8
D	5
E	3
F	2-1/2
G	1-9/16
H	15-1/2
I	3-3/8
J	2-3/4
N	4
O	6-1/2
S	4
T	10-3/8
V	1/8
W	6-3/4
X	3-5/8
Z	7-1/2



ACH-55-1PH-TEFC



REF. #	PART NUMBER	EDP #	DESCRIPTION	REQ.
1	5AC-9-625	30070	Bracket, 5/8" seal bore, 4 hole, cast iron	1
2	5AC-10	30100	Volute, 1-1/4" x 1", clockwise rotation, cast iron	1
3	30290-V-50	30290	Impeller, 3-15/16" diameter, threaded, valox plastic	1
3	30291-CI-50	30291	Impeller, 3-15/16" diameter, threaded, cast iron (optional)	1
4	TYPE 21-625	30240	Mechanical seal, type 21 for 5/8" shaft, Viton	1
4	TYPE 21-625-SC	30245	Mechanical seal, type 16 for 5/8" shaft, silicon carbide (optional)	1
5	31040	31040	Gasket, 4 hole	1
6	4001	31050	Nut, 7/16"-20, brass	1
7	4002	31060	Lock washer, 7/16", stainless steel	1
8	40950	40950	Cap screw, 3/8" NC x 3/4" hex head	8
9	41110	41110	Pipe plug, 1/8" NPT	4
10	30780-3/4HP	30780	Motor, 3/4 HP, 115/230 V, 1 phase, TEFC	1
10	30781-3/4HP	30781	Motor, 3/4 HP, 208-230/440 V, 3 phase, TEFC (optional)	1
--	ACH-55-LM	40205	Pump, 1.25" x 1" x 3-15/16", less motor	--